



For General Information:

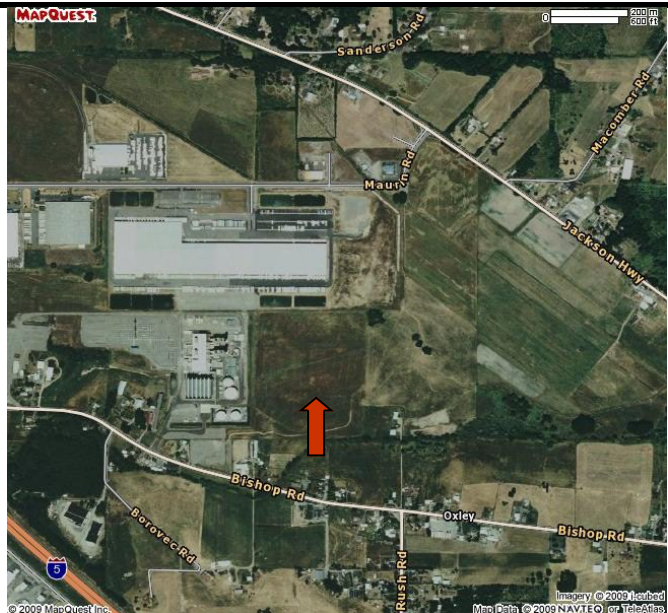
Call Lewis EDC at
360-748-0114

1899 Bishop Road

Property Size: 40 acres
Zoning: Industrial
Power: Lewis County PUD
Water: City
Sewer: City
Natural Gas: Puget Sound Energy

Listing comments

- Build-to-suit available
- Chehalis Industrial Park
- Direct access to the new LaBree Road/Interstate 5 Interchange



For Specific Information:

Call Rick Rouse or Jim Rothlin at Port of Chehalis
360-748-9365