



**For General Information**

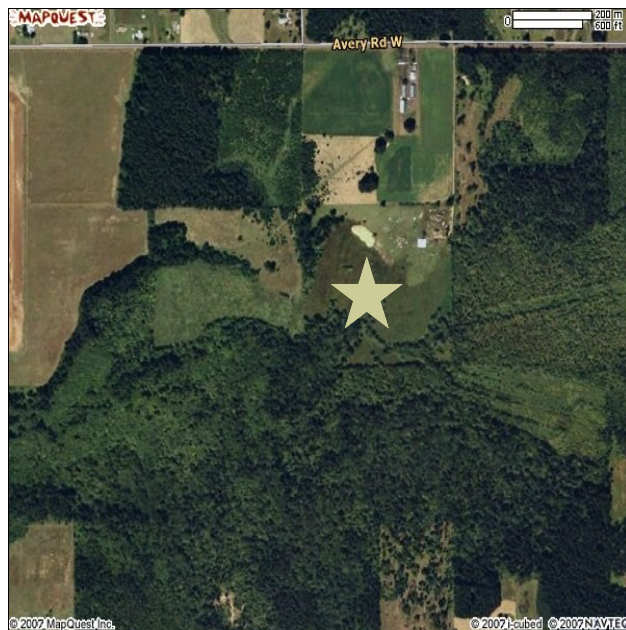
Contact Lewis EDC at  
 360-748-0114

**Napavine Industrial Park**

**Property Size:** 110 acres usable  
**Zoning:** Rural Industrial  
 (not in place)  
**Power:** Lewis County PUD  
**Water:** City  
**Natural Gas:** Puget Sound Energy  
**Topography:** Flat

**Listing comments**

- BNSF mainline rail service available
- Minimum site size of 20 acres
- Approx. 1 mile to I-5
- T-3 all-weather highest level truck -  
 Traffic county road



**For Specific Information:**  
 Contact Napavine City Mayor  
 Nick Bozarth at 360-8804993  
 Property is in a rural area of Napavine.