



For General Information:

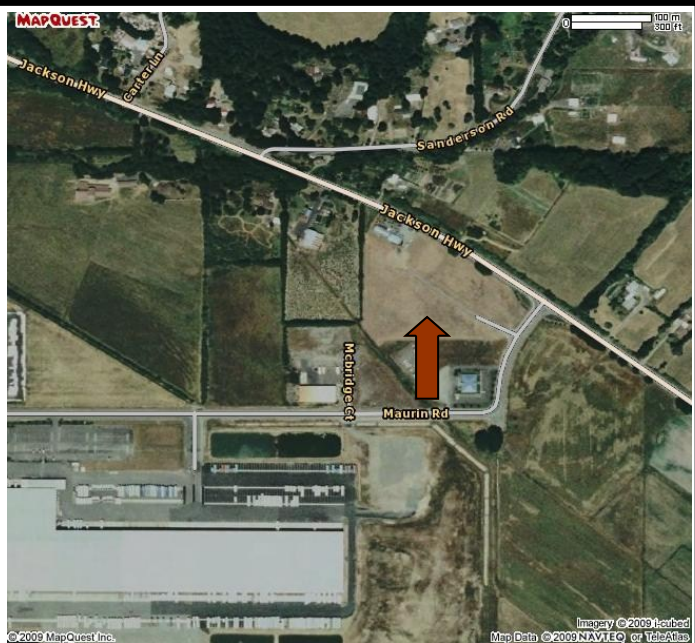
Please Call Lewis EDC at
 360-748-0114

2726 Jackson Highway

Property Size: 10.73 acres
Zoning: Industrial
Power: Lewis County PUD
Water: City
Sewer: City
Natural Gas: Puget Sound Energy

Listing comments

- Build-to-suit available
- Located in the Chehalis Industrial Park
- Served by local utilities
- Rail access
- Sites are ready for construction
- Direct access to the new LaBree Road/Interstate 5 Interchange
- Option to divide property



For Specific Information:

Call Rick Rouse or Jim Rothlin at Port of Chehalis
 360-748-9365