



**For General Information:**

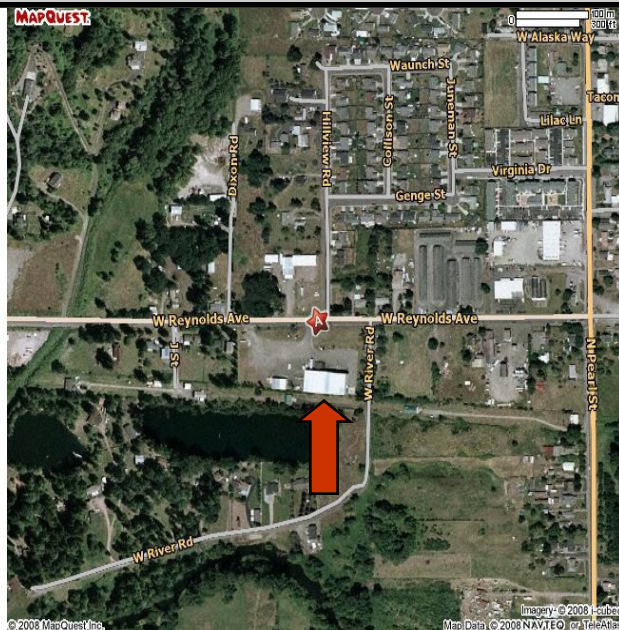
Call Lewis EDC at  
 360-748-0114

**606 Reynolds Avenue**

**Building Size:** 5,000 sf  
**Zoning:** Industrial  
**Power:** Centralia City Light  
**Water:** City  
**Sewer:** City

**Listing comments**

- 50' x 100' facility
- 18' inside net height
- Dock-high door
- 240-3 phase power plus 220 single phase
- Office space available
- Facility can easily be expanded beyond 5,000 square feet to 60,000 square feet in order to accommodate present or future expansion



**For Specific Information:**  
 Mark Conrad, Conrad Industries  
 360-748-4924