

AVAILABLE PROPERTY

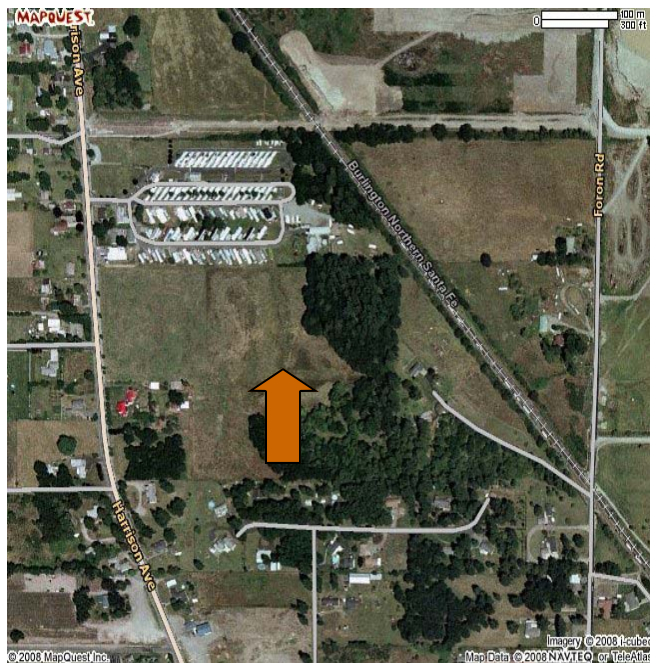


Southport Industrial Center

Property Size: 40 acres
Zoning: Industrial
Power: Centralia City Light
Water: City
Sewer: City

Listing comments

- Up to 800,000 sf build-to-suit available
- Rail served
- ESRF Fire protection system
- Easy access to I-5



Lewis County
Economic Development
COUNCIL
Creating Opportunities

Contact: Rachael Jennings
Phone: (360) 748-0114
Fax: (360) 748-1238
Email: rjennings@rainierconnect.com