

AVAILABLE PROPERTY

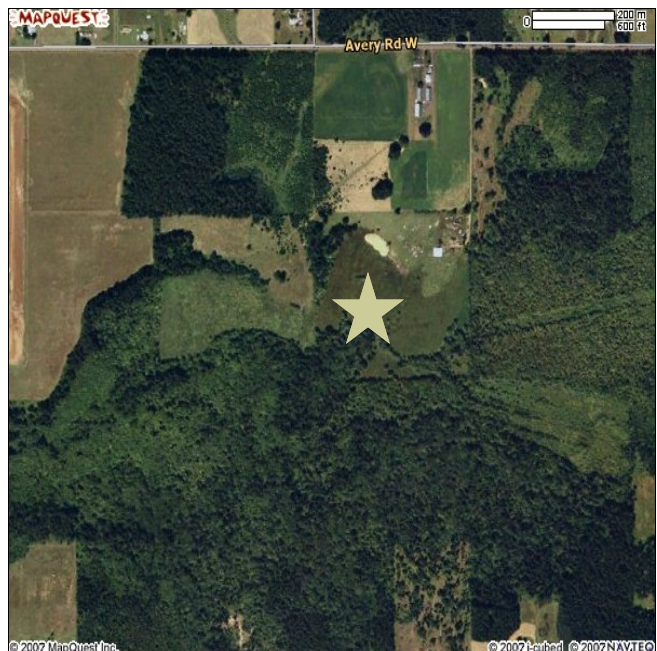


Napavine Industrial Park

Property Size:	156 acres (estimated 110 net usable)
Zoning:	Rural Industrial (not in place)
Power:	Lewis County PUD
Water:	City
Natural Gas:	Puget Sound Energy
Topography:	Flat

Listing comments

- BNSF mainline rail service available
- Minimum site size of 20 acres
- Approx. 1 mile to I-5
- T-3 all-weather highest level truck - Traffic county road



Lewis County
Economic Development
COUNCIL
Creating Opportunities

Contact: Rachael Jennings
Phone: (360) 748-0114
Fax: (360) 748-1238
Email: rjennings@rainierconnect.com