

AVAILABLE PROPERTY

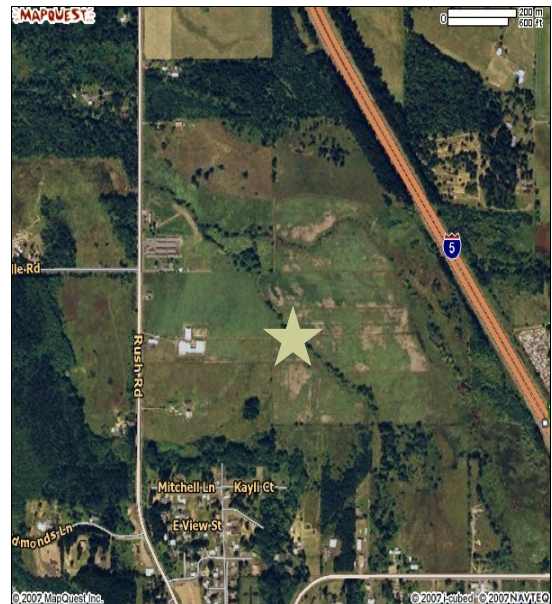


Napavine Town Center

Property Size:	118 acres
Zoning:	Approved commercial/ Residential (expired-renewal)
Power:	Lewis County PUD
Water:	City water at western boundary
Sewer:	City sewer at western boundary
Topography:	Flat

Listing comments

- 75 acres - Single Family Lots (302)
- Possible upzone to Multi-Family
- I-5 freeway frontage & Rush Road



Lewis County
Economic Development
COUNCIL
Creating Opportunities

Contact: Rachael Jennings
Phone: (360) 748-0114
Fax: (360) 748-1238
Email: rjennings@rainierconnect.com