

AVAILABLE PROPERTY

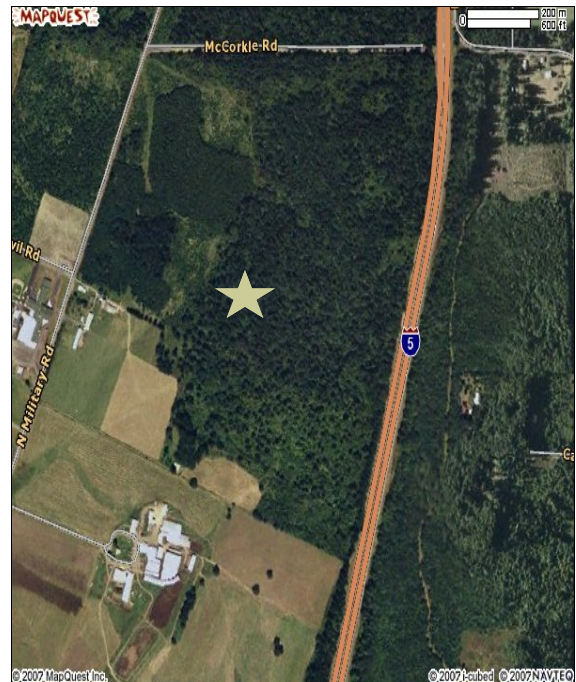


Grand Prairie

| | |
|-----------------------|--|
| Property Size: | 320 acres |
| Zoning: | Industrial, distribution, and commercial |
| Power: | Lewis County PUD |
| Water: | Water rights available City water system in engineering |
| Sewer: | City sewer system in engineering |
| Wetlands: | Minimal |
| Topography: | Flat (estimated 10' drop across) |

Listing comments

- Will parallel freeway and connect with highway SR-505
- Lots priced from \$2.75/sf (price subject to change)



Lewis County
Economic Development
COUNCIL
Creating Opportunities

Contact: Rachael Jennings
Phone: (360) 748-0114
Fax: (360) 748-1238
Email: rjennings@rainierconnect.com