

AVAILABLE PROPERTY

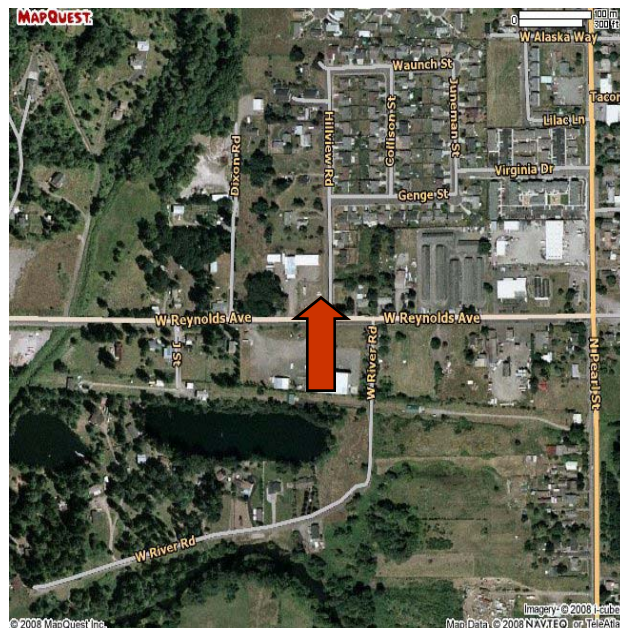


606 Reynolds Avenue

Building Size: 5,000 sf
Zoning: Industrial
Power: Centralia City Light
Water: City
Sewer: City

Listing comments

- 50' x 100' facility
- 18' inside net height
- Dock-high door
- 240-3 phase power plus 220 single phase
- Office space available
- Facility can easily be expanded beyond 5,000 square feet to 60,000 square feet in order to accommodate present or future expansion



Lewis County
Economic Development
COUNCIL
Creating Opportunities

Contact: Rachael Jennings
Phone: (360) 748-0114
Fax: (360) 748-1238
Email: rjennings@rainierconnect.com