

# AVAILABLE PROPERTY

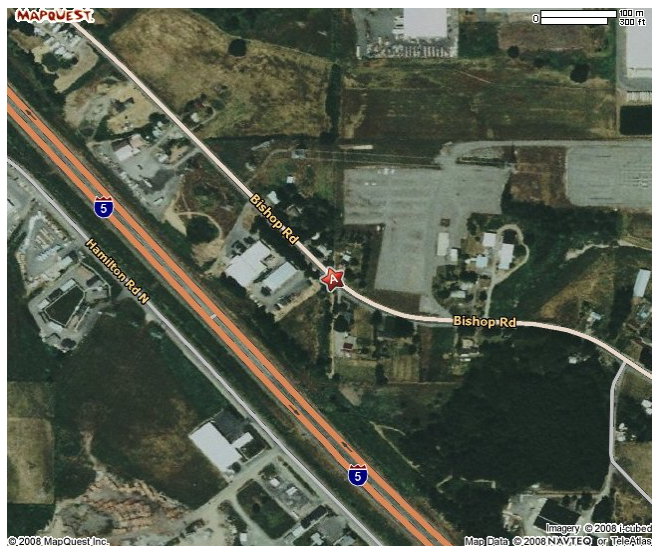


## 465 NW Prindle Street

**Building Size:** 40,000 sf  
**Zoning:** Commercial/Industrial  
**Power:** Lewis County PUD  
**Water:** City  
**Sewer:** City

### Listing comments

- 15,000 sf Clear span warehouse
- 24,000 sf Warehouse w/office area
- 1,000 sf Office area
- Two mezzanine areas
- 1,320 sf Covered platform
- 5 Dock-high doors
- Paint booth
- Sprinkler system

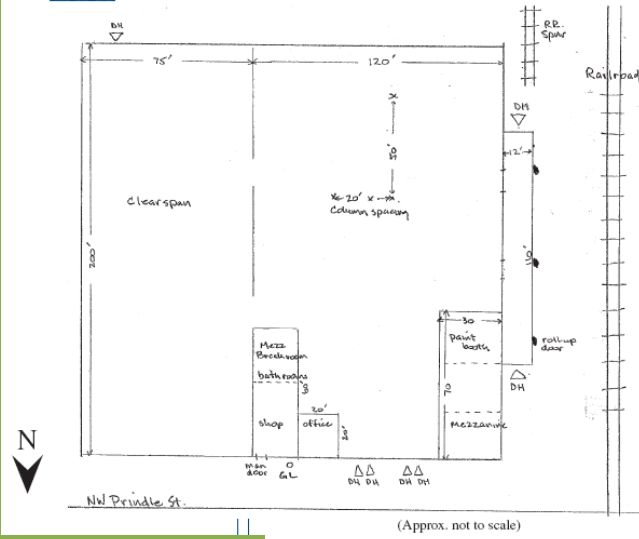


Lewis County  
**Economic Development**  
**COUNCIL**  
Creating Opportunities

**Contact:** Rachael Jennings  
**Phone:** (360) 748-0114  
**Fax:** (360) 748-1238  
**Email:** [rjennings@rainierconnect.com](mailto:rjennings@rainierconnect.com)

# AVAILABLE PROPERTY

SITE PLAN



465 NW Prindle Street



Lewis County  
Economic Development  
**COUNCIL**  
Creating Opportunities

Contact: Rachael Jennings  
Phone: (360) 748-0114  
Fax: (360) 748-1238  
Email: [rjennings@rainierconnect.com](mailto:rjennings@rainierconnect.com)