

# AVAILABLE PROPERTY

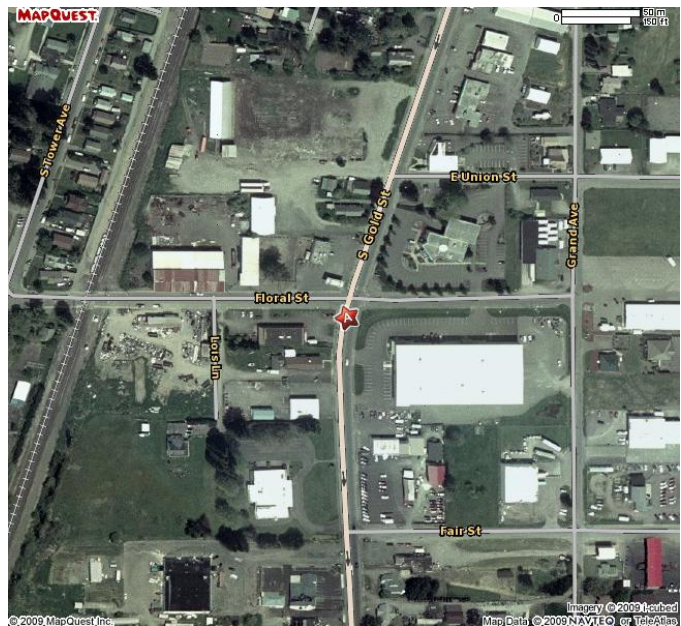


## 1408 South Gold Street

**Building Size:** 16,000 sf  
**Zoning:** Commercial  
**Power:** Centralia City Light  
**Water:** City  
**Sewer:** City

### Listing comments

- 20' Clear height
- 3.3 acres—an additional .85 acres adjoins property
- HVAC
- One loading dock/truck level doors
- Fenced yard
- One mile from I-5



Lewis County  
**Economic Development**  
**COUNCIL**  
Creating Opportunities

**Contact:** Rachael Jennings  
**Phone:** (360) 748-0114  
**Fax:** (360) 748-1238  
**Email:** [rjennings@rainierconnect.com](mailto:rjennings@rainierconnect.com)