

AVAILABLE PROPERTY

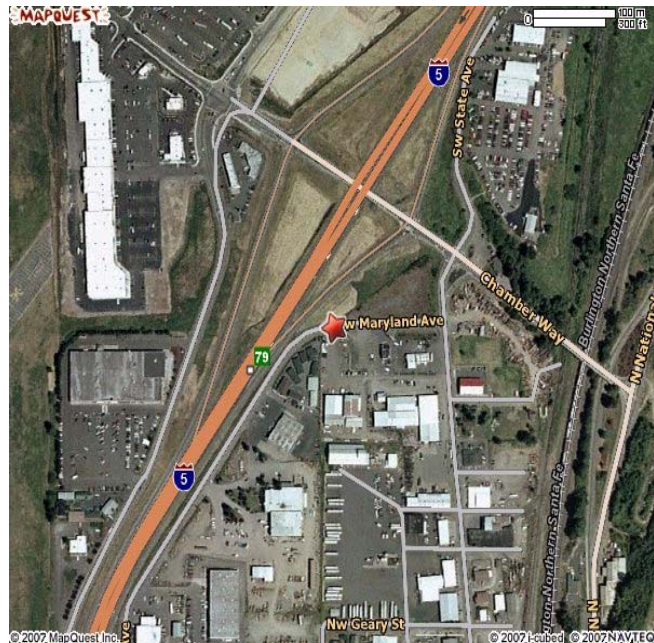


1268 NW Maryland Avenue

Building Size: 5,194 sf
Building Type: Industrial/Commercial
Zoning: Industrial
Power: Lewis County PUD
Water: City
Sewer: City
Parcel Size: 3 acres

Listing comments

- Broadband
- Available space for lease
- \$0.43/square foot
- Easy access to I-5



Lewis County
Economic Development
COUNCIL
Creating Opportunities

Contact: Rachael Jennings
Phone: (360) 748-0114
Fax: (360) 748-1238
Email: rjennings@rainierconnect.com