

# AVAILABLE PROPERTY

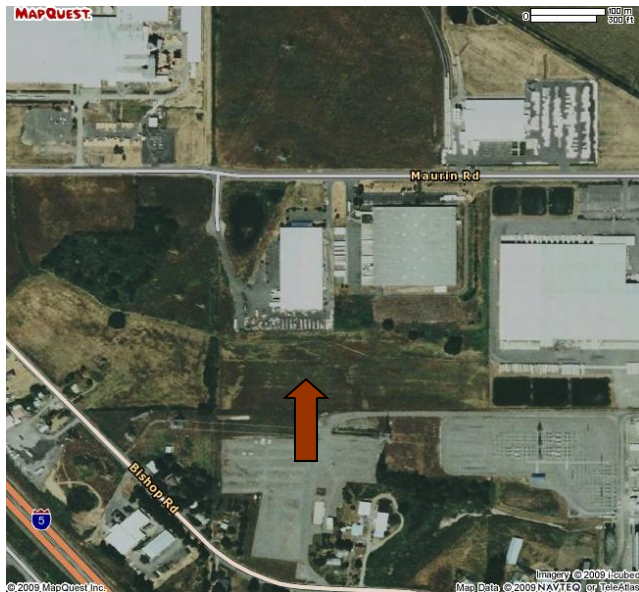


## Maurin Road

**Property Size:** 17.60 acres  
**Zoning:** Industrial  
**Power:** Lewis County PUD  
**Water:** City  
**Sewer:** City  
**Natural Gas:** Puget Sound Energy

### Listing comments

- Build-to-suit available
- Located in the Chehalis Industrial Park
- Served by local utilities
- Rail access
- Sites are ready for construction
- Direct access to the new LaBree Road/Interstate 5 Interchange
- Option to divide property



Lewis County  
**Economic Development**  
**COUNCIL**  
Creating Opportunities

**Contact:** Rachael Jennings  
**Phone:** (360) 748-0114  
**Fax:** (360) 748-1238  
**Email:** [rjennings@rainierconnect.com](mailto:rjennings@rainierconnect.com)