

Available For Lease

**Port of Chehalis
1663 Bishop Road**

Location: Chehalis, WA
Contact: Rachael Jennings, Bill Lotto
Lewis County EDC
Phone: (360) 748-0114
Fax: (360) 748-1238
Email: lewisedcbl@localaccess.com

General Information

Parcel Size: 10.26 Acres

Power: Public Utility District

Water: City

Sewer: City

Gas: Puget Sound Energy

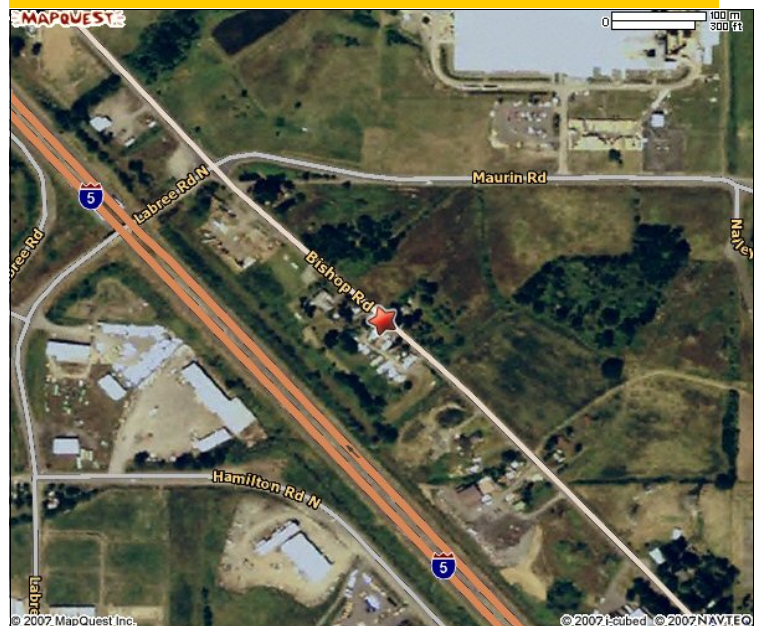
Zoning: Industrial

Listing Comments

- Direct access to I-5 interchange
- Build-to-suit available
- Located in the Industrial Park
- Served by local utilities
- Sites are ready for construction



Site Map



Lewis County Economic Development Council

P.O. Box 916 Chehalis, WA 98532
(360) 748-0114 | lewisedc.com
Lewisedcbl@localaccess.com